



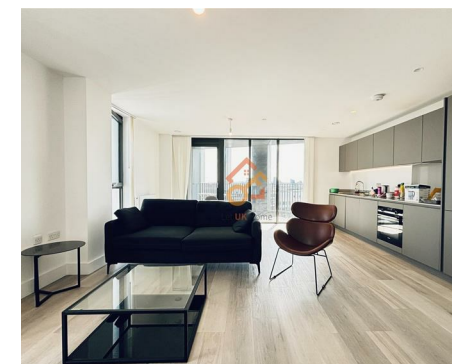
Let **UK** Home

2 Bedrooms

Flat

Located in London

£3,200 Per Month



info@letukhome.co.uk

<https://www.letukhome.co.uk/>

01795 358 886



10 Marshgate Lane London

E15 2EU



Let UK Home are excited to offer this spectacular two bedroom apartment in the heart of Corn House part of the Stratford Mill.

Upon entering, you are welcomed into a spacious reception room, perfect for entertaining guests or enjoying quiet evenings at home. The house features two well-appointed bedrooms, providing ample space for relaxation and rest. Each of the two bathrooms is designed with modern fixtures, ensuring comfort and convenience for residents and visitors alike.

The property's location on Marshgate Lane places it within easy reach of local amenities, transport links, and green spaces, making it an ideal choice for both families and professionals. Pudding Mill Lane DLR station is within walking distance, with direct access to Canary Wharf. It's easy to get to UCL East, Loughborough University London, London College of Fashion, Queen Mary University, University of East London, and more. With its stylish finishes and thoughtful layout, this house is not just a place to live, but a place to call home.

With close proximity to the Olympic Park, Aquatics Center, Westfield, London East Bank University City, East London Arts Center, Here East and Stratford Cultural District, residents enjoy a beautiful life surrounded by greenery and water, convenient transportation, and a wealth of commercial and lifestyle amenities.

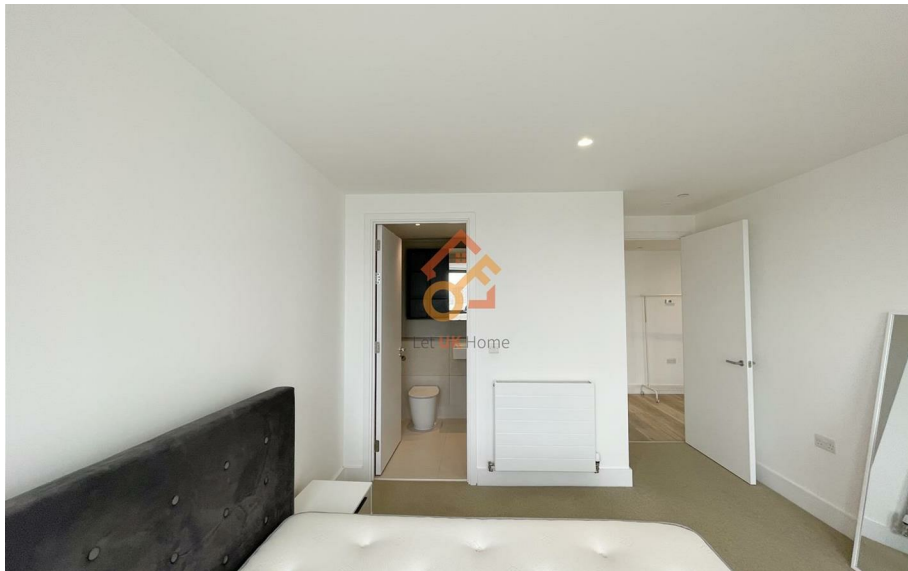
10 Marshgate Lane London

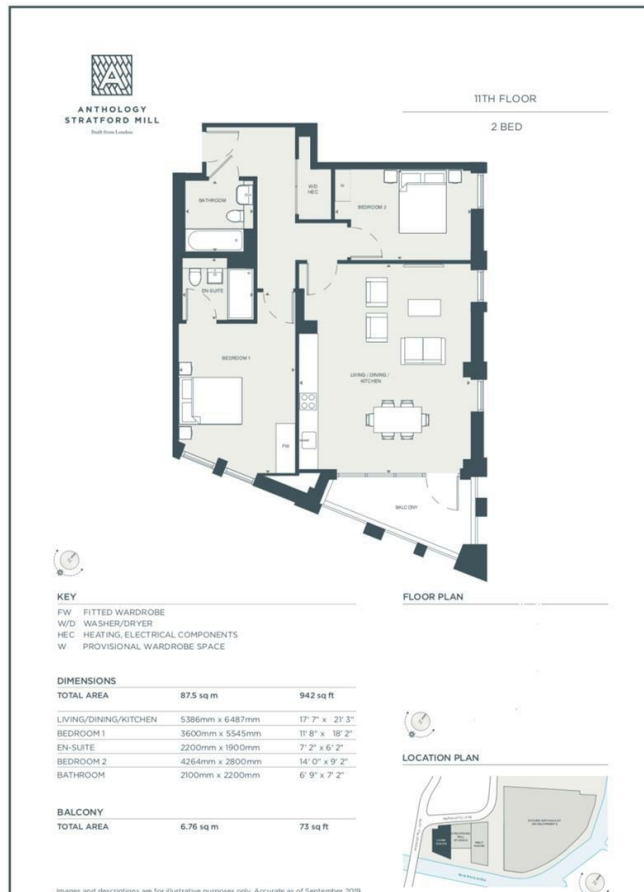
£3,200 Per Month



- 11th Floor
- 24h Security
- Walk to Pudding Mill Lane DLR station
- Stratford Cultural District

- Concierge Service
- Close to Westfield Stratford City
- The Olympic Park
- EPC Rating: B





Let **UK** Home

3F 2 Eastbourne Terrace
 Paddington
 London
 W2 6LG

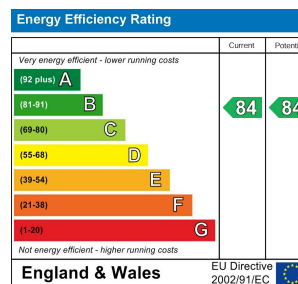
01795 358 886

info@letukhome.co.uk

Council Tax Band: E

Local Authority:

Agents Note: Whilst every care has been taken to prepare these particulars, they are for guidance purposes only. All measurements are approximate and are for general guidance purposes only and whilst every care has been taken to ensure their accuracy, they should not be relied upon and potential buyers/tenants are advised to recheck the measurements.



<https://www.letukhome.co.uk/>